

# The October activities booklet

Monthly Edition

**October 2025**



...See you next month for a new edition...

**famileo**

**famileo**

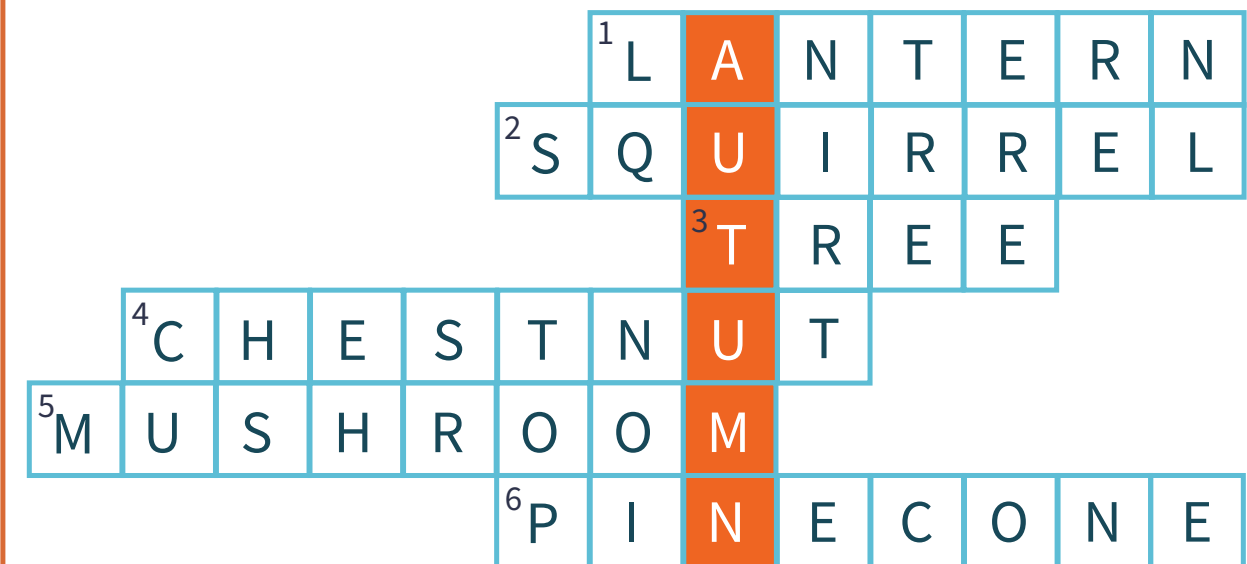
# Contents

Hidden word.....	Page 3
Logical continuation.....	Page 4
Sudokus.....	Page 5
Anagrams.....	Page 6
Search and find.....	Page 7
Secret code.....	Page 8
Logical sequence.....	Page 9
Secret word.....	Page 10
Color coding.....	Page 11
Solutions.....	Page 12

# Secret word

## Solution

1. Object that gives light in the dark, often made from a pumpkin
2. Small animal with a bushy tail, known for collecting nuts
3. Tall plant with leaves and branches where birds may nest
4. Brown nut, roasted and eaten warm during autumn
5. Small round fungus that grows in forests, sometimes edible
6. Woody cone from a pine tree, containing seeds



## SECRET WORD

# AUTUMN

Logical sequence

Solution

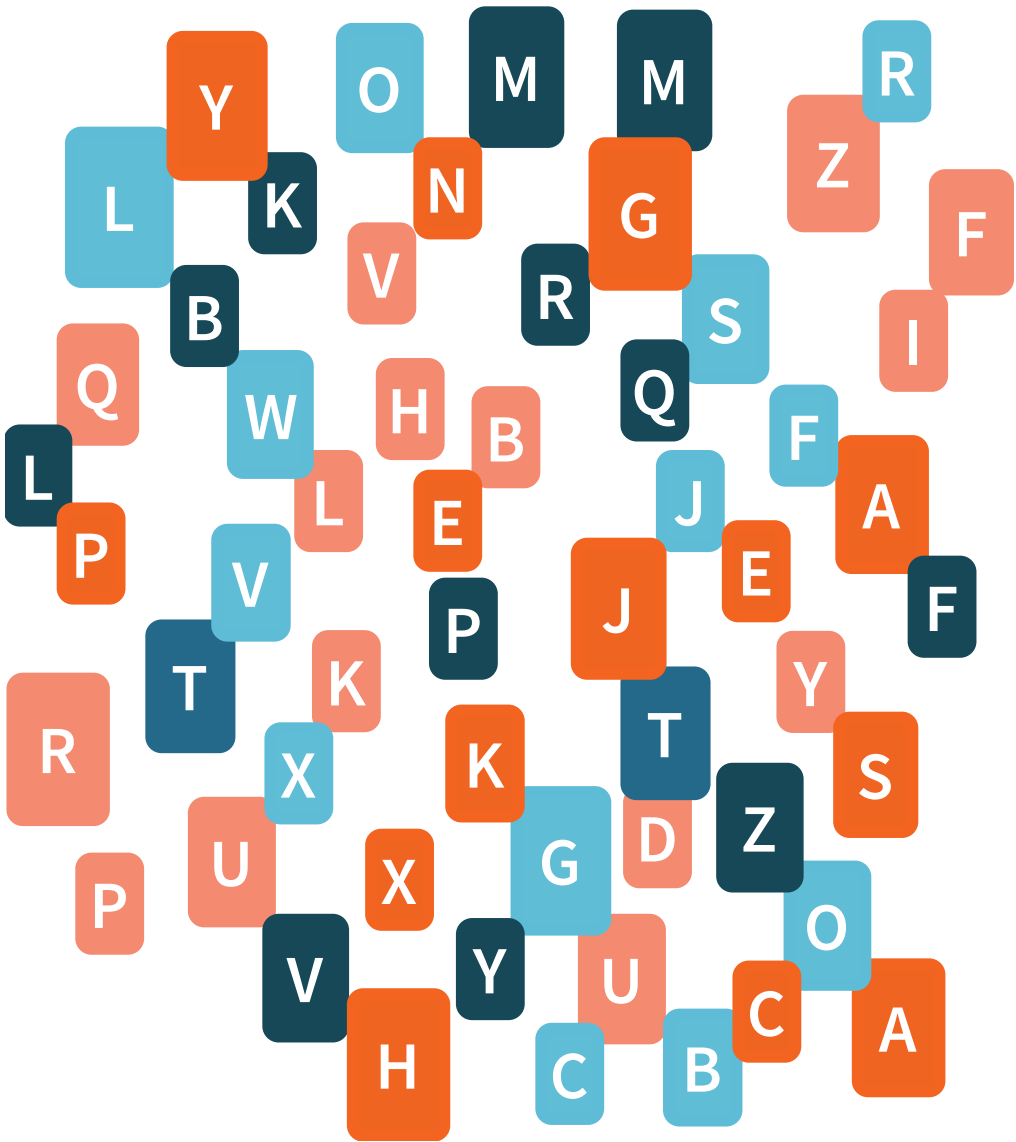
7	3	1	3	8	10	14	17	19	23
11	10	9	8	7	12	19	24	22	24
15	17	14	10	12	14	16	18	20	29
38	34	31	26	22	13	18	14	17	21
32	30	28	26	24	22	20	26	32	34
38	32	34	36	38	40	42	44	46	48
41	34	31	35	40	43	55	46	43	52
39	36	60	56	54	52	50	48	49	42
44	38	59	51	56	58	60	62		

Hidden word  
- Special fall -

Difficulty



Cross out any letters that appear more than once.  
The remaining letters will form a word related to October.



HIDDEN WORD



Difficulty

A stylized illustration of a path made of white, leaf-like shapes on a brown, textured ground. The path starts from a shopping bag at the bottom and leads upwards. Along the path, there are several leaf-shaped nodes, some of which are numbered. The numbers are: 3 (bottom left), 4 (middle left), 2 (top left), 1 (top center), 2 (top right), 3 (middle right), 4 (middle right), 5 (bottom right), 2 (bottom right), 1 (bottom right), and 1 (bottom center). The path is surrounded by small, dark, leaf-like shapes. The entire scene is enclosed in a brown, irregular hexagonal frame.

## Solution

	1	2	3	4	5
1	A	B	C	D	E
2	F	G	H	I	J
3	L	M	N	O	P
4	Q	R	S	T	U
5	V	W	X	Y	Z

Each letter is located in a 5×5 grid:  
**The first peck indicates the row.**  
**The second peck indicates the column.**

T R I C K O R T R E A T

## TRICK OR TREAT

Search and find

Solution



Sudokus

Difficulty



Fill in the grid so that each row, column, and square contains all the numbers from 1 to 9, without repetition.

6			7	4				
	1			9	5			3
8			1	3			7	2
		9					6	
4		7	6	5	9	2		1
	6					7		
1	3			7	4			6
5			8	2			9	
				6	3			8

			8					
		1		4				7
	3	6		9			5	
5	8							3
		2				1		
1							9	6
	7			6		8	1	
3				5		2		
					4			

Anagrams  
- Fall Special -

Difficulty

★ ★ ★

The letters of the autumn words below have been scrambled.  
Put them back in the correct order to find the hidden words.

K P M U P I N

→

T U N A M U

→

S L E A V E

→

A C D N L E

→

N R O C A

→

L M E A P

→

P L E A P

→

F A L E

→

Anagrams

Solution

K P M U P I N

→

P U M P K I N

T U N A M U

→

A U T U M N

S L E A V E

→

L E A V E S

A C D N L E

→

C A N D L E

N R O C A

→

A C O R N

L M E A P

→

M A P L E

P L E A P

→

A P P L E

F A L E

→

L E A F

Sudokus

Solution

6	2	3	7	4	8	9	1	5
7	1	4	2	9	5	6	8	3
8	9	5	1	3	6	4	7	2
2	5	9	3	1	7	8	6	4
4	8	7	6	5	9	2	3	1
3	6	1	4	8	2	7	7	9
1	3	8	9	7	4	5	2	6
5	4	6	8	2	1	3	9	7
9	7	2	5	6	3	1	4	8

4	9	7	8	5	2	6	3	1
2	5	1	6	4	3	9	8	7
8	3	6	7	9	1	4	5	2
5	8	9	4	1	6	7	2	3
7	6	2	5	3	9	1	4	8
1	4	3	2	7	8	5	9	6
9	7	4	3	6	2	8	1	5
3	1	8	9	5	7	2	6	4
6	2	5	1	8	4	3	7	9

Search and find  
- Fall special -

Difficulty

★☆☆

Seven mischievous little squirrels are hiding in the scene.  
Look closely and observe every detail of autumn.



# Secret code

## - Halloween special -

Difficulty

★ ★ ★

A secret Halloween message has been hidden in these keystrokes!  
Each letter is encoded by two series of keystrokes.  
Decode the message and discover the mystery phrase.

	1	2	3	4	5
1	A	B	C	D	E
2	F	G	H	I	J
3	L	M	N	O	P
4	Q	R	S	T	U
5	V	W	X	Y	Z

**The Peck Code**  
The peck code was used by prisoners to communicate secretly.  
Each letter is located in a 5×5 grid:  
The first peck indicates the row.  
The second peck indicates the column.

### CODE TO BE DECIPHERED

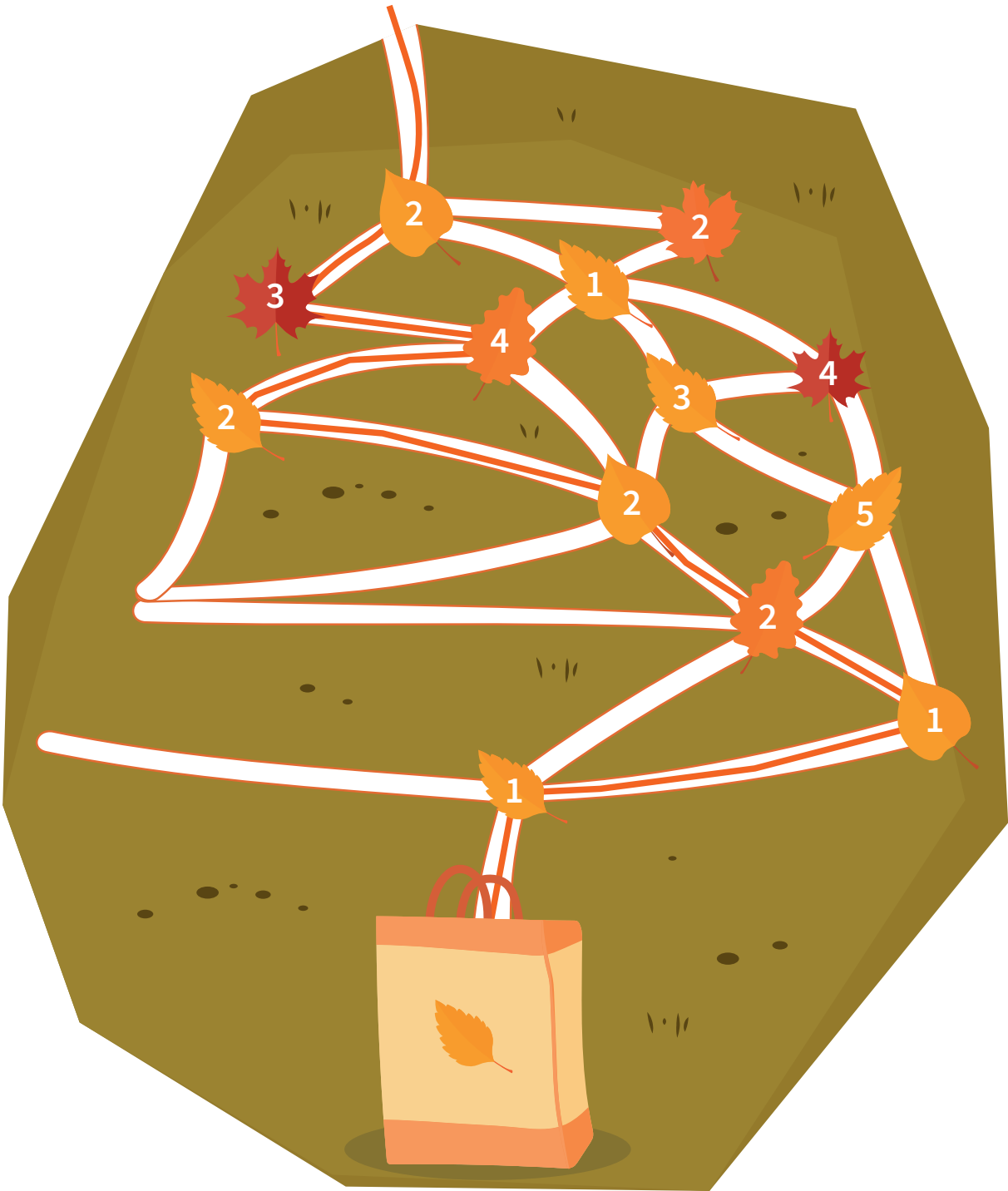
44 42 24 13 25 / 34 42 / 44 42 15 11 44

REWRITE THE SENTENCE



# Logical continuation

Solution





Hidden word

Solution

W

N

I

D

HIDDEN WORD

WIND

Logical sequence

Difficulty

★ ★ ★

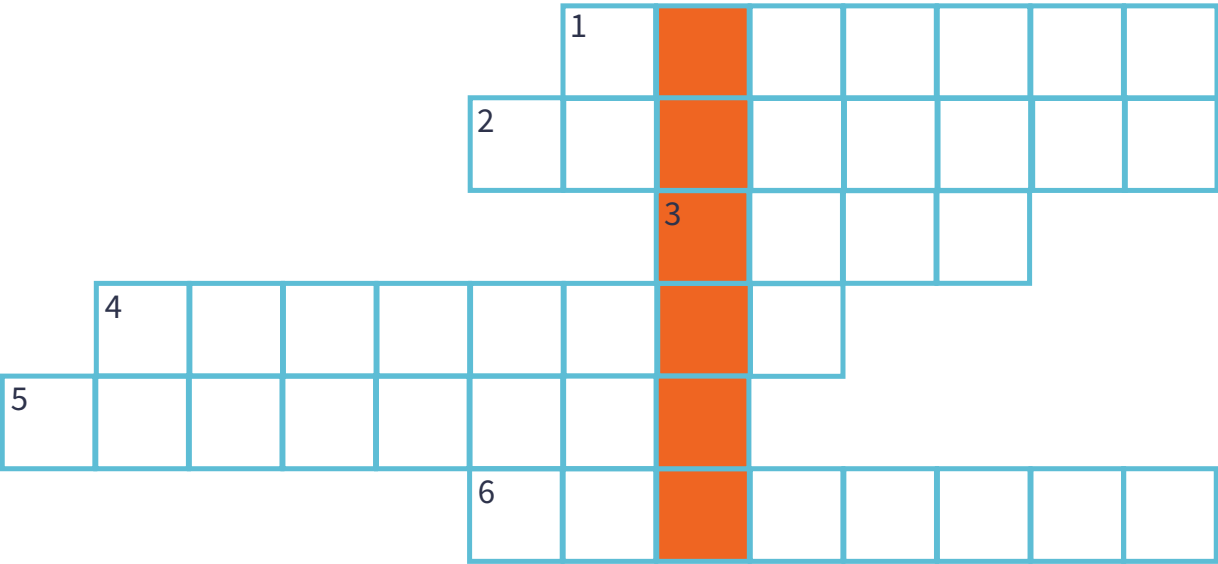
Find the solution by connecting the even numbers from 2 to 62 in ascending order.

	→	2	4	6	3	6	8	12	18
7	3	1	3	8	10	14	17	19	23
11	10	9	8	7	12	19	24	22	24
15	17	14	10	12	14	16	18	20	29
38	34	31	26	22	13	18	14	17	21
32	30	28	26	24	22	20	26	32	34
38	32	34	36	38	40	42	44	46	48
41	34	31	35	40	43	55	46	43	52
39	36	60	56	54	52	50	48	49	42
44	38	59	51	56	58	60	62	→	

Secret word  
- Fall special -

Fill in the blanks with words that match the definition and discover the secret word in the colored boxes.

- 1. Object that gives light in the dark, often made from a pumpkin
- 2. Small animal with a bushy tail, known for collecting nuts
- 3. Tall plant with leaves and branches where birds may nest
- 4. Brown nut, roasted and eaten warm during autumn
- 5. Small round fungus that grows in forests, sometimes edible
- 6. Woody cone from a pine tree, containing seeds

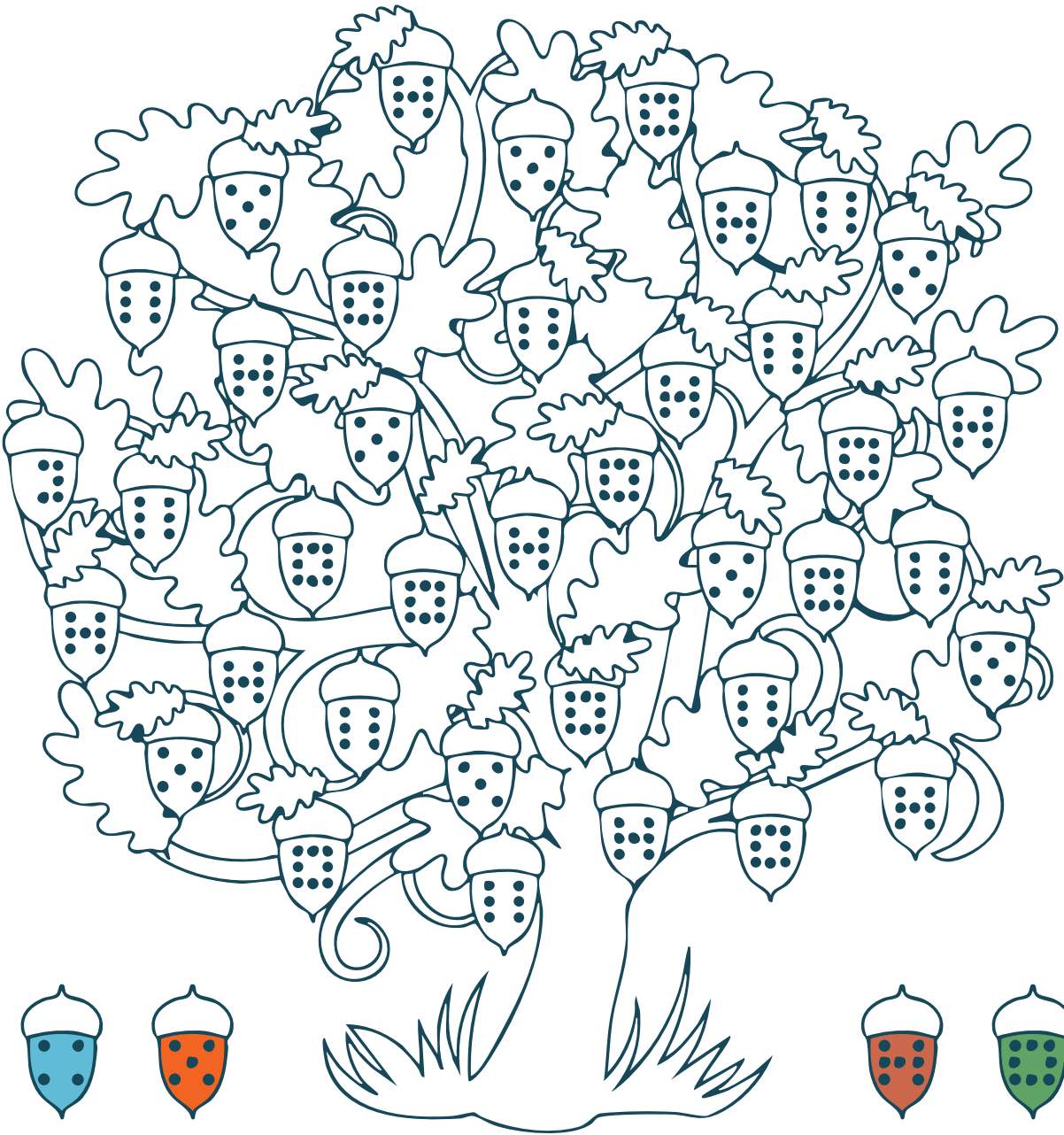


SECRET WORD

Difficulty

★ ★ ☆

Color coding  
- Fall Special -



Difficulty

★ ☆ ☆